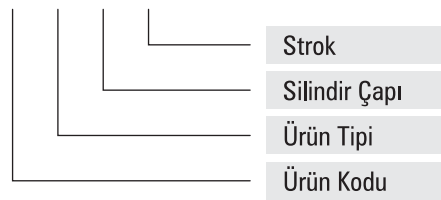


Silindir (Ø mm)	Mil (Ø mm)	İtme Kuvveti (kg) (6 Bar)	Çekme Kuvveti (kg) (6 Bar)
32	12	48	41
40	16	75	63
50	20	118	99
63	20	187	168
80	25	301	272
100	25	471	441

1kg : 10 Newton

Silindir Kod Açıklaması

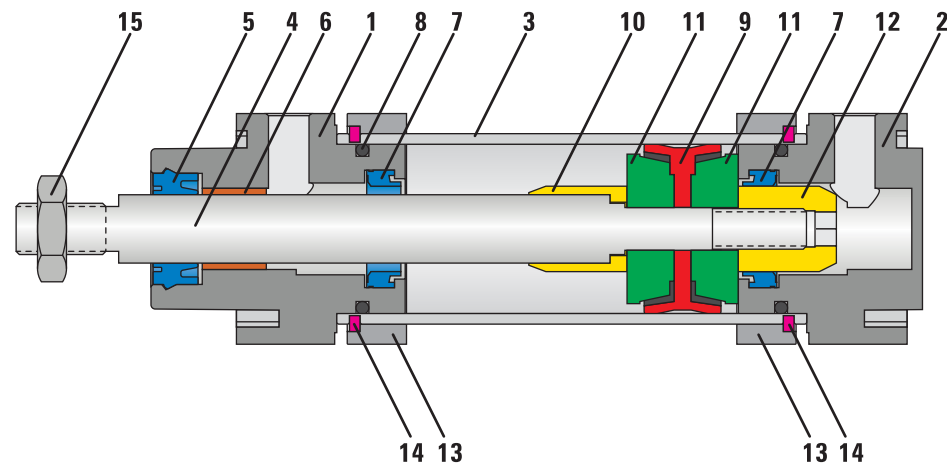
PNS ... 32x50



Genel Özellikler

Çalışma şartı	Filtre edilmiş ve yağlı hava ile çalışır.
Çalışma Basıncı	1.5 / 10 bar.
Silindir Çapları (mm)	Ø32-Ø40-Ø50-Ø63-Ø80-Ø100
Strok (mm)	50-100-125-160-200-250-300-350-400-450-500

İstenilen strokta üretim yapılmaktadır.



14 13

13 14

No	Malzeme Adı	Malzeme Özelliği	Adet
9	Piston Keçesi	NBR	1
10	Yastıklama Burcu	Alüminyum	1
11	Piston Keçesi Pulu	Alüminyum	2
12	Yastıklama Somunu	Alüminyum	1
13	Kare Flanş	Alüminyum	2
14	Kare Flanş Segmanı	Çelik	2
15	Mil Ucu Somunu	Galvaniz Kaplamalı Çelik	1

No	Malzeme Adı	Malzeme Özelliği	Adet
1	Ön Kapak	Alüminyum	1
2	Arka Kapak	Alüminyum	1
3	Boru	Çelik	1
4	Piston Mili	X20 Cr13 Sert Krom Kaplamalı	1
5	Mil Keçesi	PU	1
6	Yataklama Burcu	CSB-40	1
7	Yastıklama Keçesi	PU	2
8	Kapak O-ringi	NBR	2

Silindir (Ø mm)	A	B	C	D1 (Ø)	D2 (Ø)	D3 (Ø)	D4 (Ø)	D5	D6	E	L0	L1	L2	L3	L4	1	2	3	☆
32	20	30	45	M10x1.25	12	30	46	58	M5	32.5	114	94	16	4	40	10	3	5	G1/8"
40	24	34	54	M12x1.25	16	35	56	71	M5	39.6	130.5	105	20	4	38	13	3	5	G1/4"
50	32	44	65	M16x1.5	20	40	68	85	M6	48	136	106	25	4	40	17	3	5	G1/4"
63	32	44	80	M16x1.5	20	42	84	105	M6	59.4	149	115	28	4	46	17	3	6	G3/8"
80	40	54	96	M20x1.5	25	48	100	125	M8	70.7	164	124	34	4	50	22	3	8	G3/8"
100	40	53	126	M20x1.5	25	52	132	166	M8	93.4	181	134	40	4	56	22	3	8	G1/2"

Silindir (Ø mm)	A	B	C	D1 (Ø)	D2 (Ø)	D3 (Ø)	D4 (Ø)	D5	D6	E	L0	L1	L2	L3	L4	1	2	3	☆
32	20	30	45	M10x1.25	12	30	46	58	M5	32.5	114	94	16	4	40	10	3	5	G1/8"
40	24	34	54	M12x1.25	16	35	56	71	M5	39.6	130.5	105	20	4	38	13	3	5	G1/4"
50	32	44	65	M16x1.5	20	40	68	85	M6	48	136	106	25	4	40	17	3	5	G1/4"
63	32	44	80	M16x1.5	20	42	84	105	M6	59.4	149	115	28	4	46	17	3	6	G3/8"
80	40	54	96	M20x1.5	25	48	100	125	M8	70.7	164	124	34	4	50	22	3	8	G3/8"
100	40	53	126	M20x1.5	25	52	132	166	M8	93.4	181	134	40	4	56	22	3	8	G1/2"

Silindir (Ø mm)	A	B	C	D1 (Ø)	D2 (Ø)	D3 (Ø)	D4 (Ø)	D5	D6	E	L0	L1	L2	L3	L4	1	2	3	☆
32	20	30	45	M10x1.25	12	30	46	58	M5	32.5	114	94	16	4	40	10	3	5	G1/8"
40	24	34	54	M12x1.25	16	35	56	71	M5	39.6	130.5	105	20	4	38	13	3	5	G1/4"
50	32	44	65	M16x1.5	20	40	68	85	M6	48	136	106	25	4	40	17	3	5	G1/4"
63	32	44	80	M16x1.5	20	42	84	105	M6	59.4	149	115	28	4	46	17	3	6	G3/8"
80	40	54	96	M20x1.5	25	48	100	125	M8	70.7	164	124	34	4	50	22	3	8	G3/8"
100	40	53	126	M20x1.5	25	52	132	166	M8	93.4	181	134	40	4	56	22	3	8	G1/2"

Silindir (Ø mm)	A	B	C	D1 (Ø)	D2 (Ø)	D3 (Ø)	D4 (Ø)	D5	D6	E	L0	L1	L2	L3	L4	1	2	3	☆
32	20	30	45	M10x1.25	12	30	46	58	M5	32.5	114	94	16	4	40	10	3	5	G1/8"
40	24	34	54	M12x1.25	16	35	56	71	M5	39.6	130.5	105	20	4	38	13	3	5	G1/4"
50	32	44	65	M16x1.5	20	40	68	85	M6	48	136	106	25	4	40	17	3	5	G1/4"
63	32	44	80	M16x1.5	20	42	84	105	M6	59.4	149	115	28	4	46	17	3	6	G3/8"
80	40	54	96	M20x1.5	25	48	100	125	M8	70.7	164	124	34	4	50	22	3	8	G3/8"
100	40	53	126	M20x1.5	25	52	132	166	M8	93.4	181	134	40	4	56	22	3	8	G1/2"

Silindir (Ø mm)	A	B	C	D1 (Ø)	D2 (Ø)	D3 (Ø)	D4 (Ø)	D5	D6	E	L0	L1	L2	L3	L4	1	2	3	☆
32	20	30	45	M10x1.25	12	30	46	58	M5	32.5	114	94	16	4	40	10	3	5	G1/8"
40	24	34	54	M12x1.25	16	35	56	71	M5	39.6	130.5	105	20	4	38	13	3	5	G1/4"
50	32	44	65	M16x1.5	20	40	68	85	M6	48	136	106	25	4	40	17	3	5	G1/4"
63	32	44	80	M16x1.5	20	42	84	105	M6	59.4	149	115	28	4	46	17	3	6	G3/8"
80	40	54	96	M20x1.5	25	48	100	125	M8	70.7	164	124	34	4	50	22	3	8	G3/8"
100	40	53	126	M20x1.5	25	52	132	166	M8	93.4	181	134	40	4	56	22	3	8	G1/2"

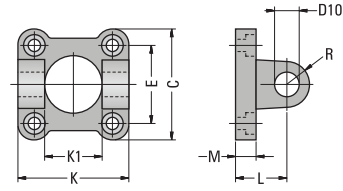
Silindir (Ø mm)	A	B	C	D1 (Ø)	D2 (Ø)	D3 (Ø)	D4 (Ø)	D5	D6	E	L0	L1	L2	L3	L4	1	2	3	☆
32	20	30	45	M10x1.25	12	30	46	58	M5	32.5	114	94	16	4	40	10	3	5	G1/8"
40	24	34	54	M12x1.25	16	35	56	71	M5	39.6	130.5	105	20	4	38	13	3	5	G1/4"
50	32	44	65	M16x1.5	20	40	68	85	M6	48	136	106	25	4	40	17	3	5	G1/4"
63	32	44	80	M16x1.5	20	42	84	105	M6	59.4	149	115	28	4	46	17	3	6	G3/8"
80	40	54	96	M20x1.5	25	48	100	125	M8	70.7	164	124	34	4	50	22	3	8	G3/8"
100	40	53	126	M20x1.5	25	52	132	166	M8	93.4	181	134	40	4	56	22	3	8	G1/2"

Silindir (Ø mm)	A	B	C	D1 (Ø)	D2 (Ø)	D3 (Ø)	D4 (Ø)	D5	D6	E	L0	L1	L2	L3	L4	1	2	3	☆
32	20	30	45	M10x1.25	12	30	46	58	M5	32.5	114	94	16	4	40	10	3	5	G1/8"
40	24	34	54	M12x1.25	16	35	56	71	M5	39.6	130.5	105	20	4	38	13	3	5	G1/4"
50	32	44	65	M16x1.5	20	40	68	85	M6	48	136	106	25	4	40	17	3	5	G1/4"
63	32	44	80	M16x1.5	20	42	84	105	M6	59.4	149	115	28	4	46	17	3	6	G3/8"
80	40	54	96	M20x1.5	25	48	100	125	M8	70.7	164	124	34	4	50	22	3	8	G3/8"
100	40	53	126	M20x1.5	25	52	132	166	M8	93.4	181	134	40	4	56	22	3	8	G1/2"

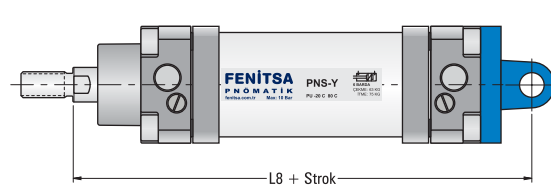
Silindir (Ø mm)	A	B	C	D1 (Ø)	D2 (Ø)	D3 (Ø)	D4 (Ø)	D5	D6	E	L0	L1	L2	L3	L4	1	2	3	☆
32	20	30	45	M10x1.25	12	30	46	58	M5	32.5	114	94	16	4	40	10	3	5	G1/8"
40	24	34	54	M12x1.25	16	35	56	71	M5	39.6	130.5	105	20	4	38	13	3	5	G1/4"
50	32	44	65	M16x1.5	20	40	68	85	M6	48	136	106	25	4	40	17	3	5	G1/4"
63	32	44	80	M16x1.5	20	42	84	105	M6	59.4	149	115	28	4	46	17	3	6	G3/8"
80	40	54	96	M20x1.5	25	48	100	125	M8	70.7	164	124	34	4	50	22	3	8	G3/8"
100	40	53	126	M20x1.5	25	52	132	166	M8	93.4	181	134	40	4	56	22	3	8	G1/2"

Silindir (Ø mm)	A	B	C	D1 (Ø)	D2 (Ø)	D3 (Ø)	D4 (Ø)	D5	D6	E	L0	L1	L2	L3	L4	1	2	3	☆
32	20	30	45	M10x1.25	12	30	46	58	M5	32.5	114								

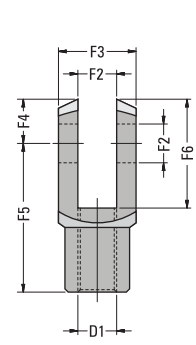
Ekleme Bağlantı



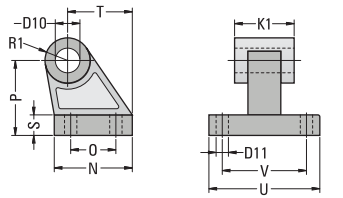
Ekleme Bağlantı



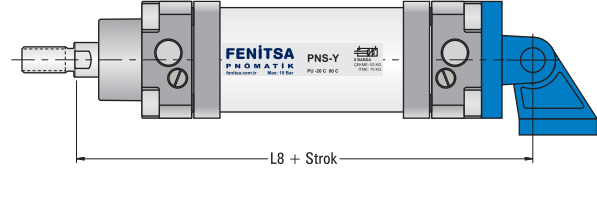
Çatal Bağlantı



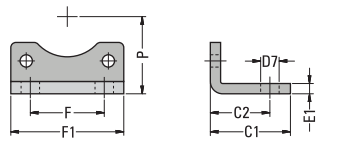
Yer Bağlantı



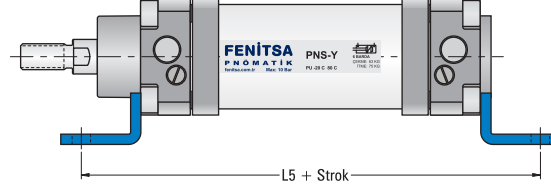
Ekleme Yer Bağlantı



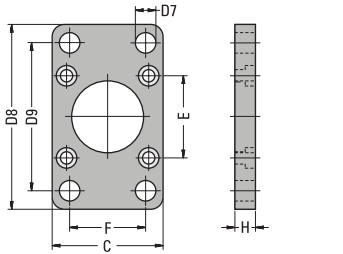
Ayak Bağlantı



Ayak Bağlantı



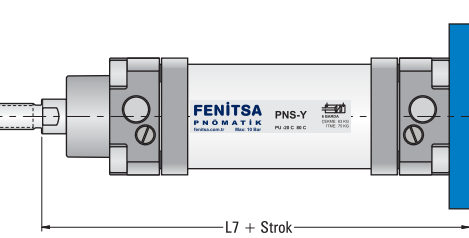
Flanş Bağlantı



Flanş Bağlantı



Flanş Bağlantı



Silindir (Ø mm)	C1	C2	D1	D7 (Ø)	D8	D9	D10 (Ø)	D11 (Ø)	E1	F	F1	F2 (Ø)	F3	F4	F5	F6	H
32	32	24	M10x1.25	7	77	64	10	5.5	4	32	45	10	20	12	40	32	10
40	38	28	M12x1.25	9	90	72	12	5.5	5	36	54	12	24	14	48	38	10
50	42	32	M16x1.5	9	110	90	12	6.5	6	45	65	16	32	19	64	51	12
63	50	35	M16x1.5	9	125	100	16	6.5	6	50	80	16	32	19	64	51	15
80	60	43	M20x1.5	12	154	126	16	9	8	63	96	20	40	25	80	65	18
100	57	43	M20x1.5	14	186	150	20	9	8	75	126	20	40	25	80	65	18

Silindir (Ø mm)	K	K1	L	L5	L6	L7	L8	M	N	O	P	R	R1	S	T	U	V
32	45	26	22	142	16	130	142	8	31	18	32	10	10	8	27.5	51	38
40	52	28	25	161	20	145	160	9	35	22	36	12	12	10	30.5	64	41
50	60	32	27	170	25	155	170	11	45	30	45	12	12	12	40.5	65	50
63	70	40	35	185	25	170	190	12	50	35	50	16	16	12	44.5	67	52
80	90	50	38	210	30	190	210	14	60	40	63	16	16	14	57	86	66
100	110	60	43	220	35	205	230	15	70	50	71	20	20	15	65	96	76

Firmamız her türlü ölçü değişikliği hakkını saklı tutar.

PNS - PNSY

Pnömatik Normal Seri Silindir
Pnömatik Normal Seri Yastıklı Silindir

CETOP RP 43P

Ø32-Ø40-Ø50-Ø63-Ø80-Ø100 mm

