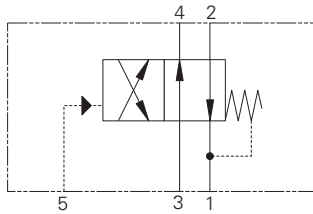


PTS6-10 - Pilot to Shift Valve

Remote pilot operated, directional control valve
23 L/min (6 USgpm) • 210 bar (3000 psi)



Operation

This valve allows flow between ports 1 and 2 and ports 3 and 4 until sufficient pressure has been applied at port 5 and the spring bias is overcome.

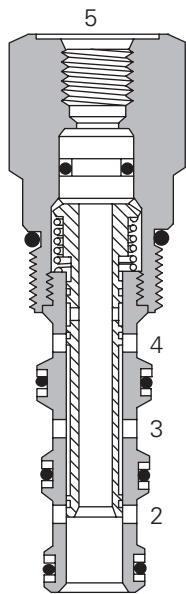
At that time, flow is directed between ports 1 and 4 and ports 3 and 2. During the cross-over transition, all ports are blocked. The spring chamber for this valve is vented internally to port 1.

Features

Hardened, ground and honed sleeve and spool for low internal leakage.

Sectional View

D



Description

This is a 4-way 2 position, remotely pilot operated directional control valve ideal for reversing a function when the pilot pressure is applied or lost.

Performance Data

Ratings and Specifications

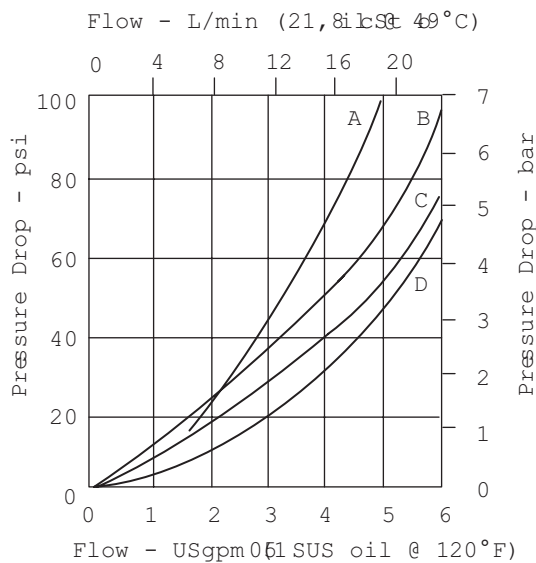
Performance data is typical with fluid at 21,8 cSt (105 SUS) and 49°C (120°F)

Typical application pressure (all ports)	210 bar (3000 psi)
Cartridge fatigue pressure (infinite life)	210 bar (3000 psi)
Rated flow	23 L/min (6 USgpm)
Internal leakage	164 cc/min (10 in ³ /min) maximum @ 210 bar (3000 psi)
Temperature range	-40° to 120°C (-40° to 248°F)
Pilot pressure	4,2 bar (60 psi)
Pilot displacement volume	0,49 cm ³ (0.02 in ³)
Cavity	C-10-4
Fluids	All general purpose hydraulic fluids such as: MIL-H-5606, SAE 10, SAE 20, etc.
Filtration	Cleanliness code 18/16/13
Standard housing materials	Aluminum
Weight cartridge only	0,15 kg (0.33 lbs)
Seal kit	889625 (Buna-N), 566080 (Viton)

Viton is a registered trademark of E.I. DuPont

Pressure Drop Curves

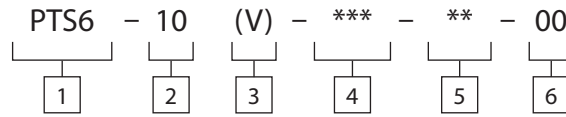
Cartridge only



PTS6-10 - Pilot to Shift Valve

Remote pilot operated, directional control valve
23 L/min (6 USgpm) • 210 bar (3000 psi)

Model Code



1 Function
PTS6 - Pilot to shift valve

2 Size
10 - 10 size

3 Seal Material
Blank - Buna-N
V - Viton®

4 Port Size

Code	Port Size	Housing Number	
		Aluminum Light Duty	Aluminum Fatigue Rated
0	Cartridge		
A3B	3/8" BSPP	02-179705	-
A6T	SAE 6	566161	-
A2G	1/4" BSPP	-	876709
A3G	3/8" BSPP	-	876715
A6H	SAE 6	-	876708
A8H	SAE 8	-	876713

See section J for housing details.

5 Pilot to shift (nominal)
60 - 4,2 bar (60 psi)

6 Special Features
00 - None
(Only required if valve has special features, omitted if "00")

Dimensions

mm (inch)

Cartridge Only

Torque cartridge in aluminum housing
47-75 Nm (35-40 ft lbs)

Torque cartridge in steel housing 68-75 Nm
(50-55 ft lbs)

Installation Drawing

