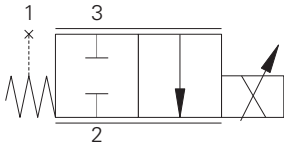


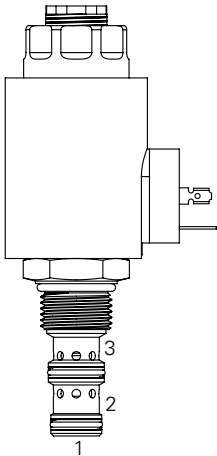
# EFV1-10-C - Proportional Valve

Proportional flow, normally closed, poppet  
Up to 38 L/min (10 USgpm) • 210 bar (3000 psi)

B



Sectional View



## Description

This is a 2 way 2 position, pilot operated spool type, normally closed, proportional flow control screw in cartridge valve. Ideal for speed control and in conjunction with pressure compensators to provide proportional pressure compensated flow control to any actuator.

## Operation

The valve is controlled by current supplied to the coil. At zero current, the valve is fully closed from port 3 to port 2. At 1500 mA (12V coil) the valve is considered fully open. This is the maximum intended current level for use in applications. Port 1 is used for pressure balancing the spool and armature and must be blocked in all cases. The maximum intended pressure drop is 300 PSID. At pressure drops above 300 PSID, almost no increase in flow is obtained. The intended flow direction is from port 3 to port 2.

Operation of the valve with flow from port 2 to port 3 will produce flow vs current and flow vs pressure drop curves that are significantly different from those obtained with flow from port 3 to port 2. Since the spool and armature are pressure balanced, the operating pressure does not affect the operating characteristics of the valve. The operating point of the valve is determined only by current, pressure drop and temperature.

## Features

Hardened and ground working parts to give long life with good control; Compact design with low pressure drop. IP69K Tough coil compatibility, continuously rated.

## Performance Data

### Ratings and Specifications

Performance data is typical with fluid at 21,8 cST (105 SUS) and 49°C (120°F)

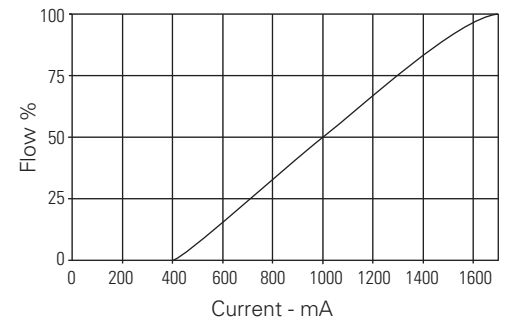
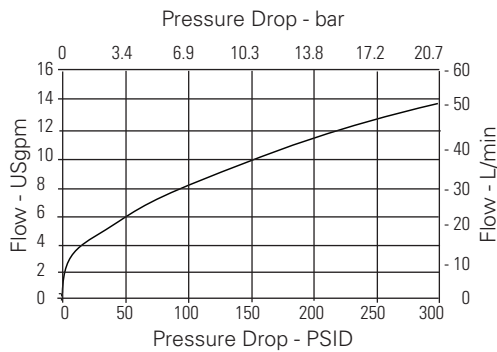
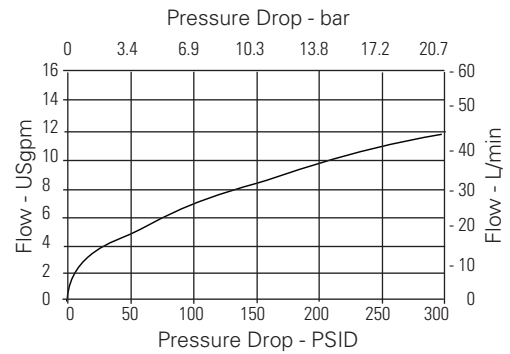
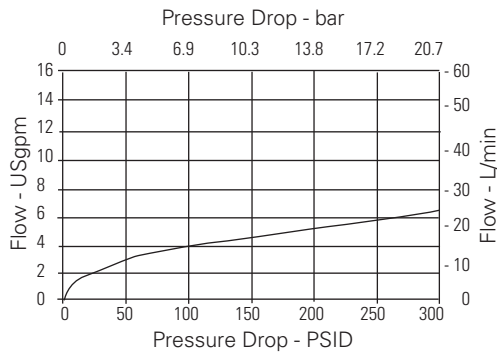
Typical application pressure	210 bar (3000 psi)
Cartridge endurance rating	1 million cycles
Cartridge fatigue pressure (infinite life)	210 bar (3000 psi) NFPA rated
Rated flow	Flow rating "A" 15.1 L/min (4 USgpm) Flow rating "B" 30.2 L/min (8 USgpm) Flow rating "C" 37.9 L/min (10 USgpm)
Internal leakage	197 cm <sup>3</sup> /min (12 in <sup>3</sup> /min) @ 3000 PSID
Nominal supply voltage	12/24 V
Current to fully close valve	1500-1600 mA (12V coil), 750-800 mA (24V coil)
Recommended PWM frequency	200-400 Hz
Coil resistance	4.7v /12V, 19.0 /24V
Mass	Cartridge only 0,37 kg (0.82 lb), cartridge with coil and end nut 0,73 kg (1.62 lb)
Temperature range	-30° to 90°C (-22° to 194°F)
Maximum oil temperature	120°C (248°F)
Maximum internal coil temperature	200°C (392°F)
Cavity	C-10-3
Fluids	All general purpose hydraulics fluids such as: MIL-H-5606, SAE 10, SAE 20, DTE 24, etc.
Filtration	Cleanliness code 18/16/13
Housing material (standard)	Aluminum or steel
Hysteresis	1 USgpm with 400Hz PWM driver
Seal kit	9900225-000 (Buna-N), 9900226-000 (Viton)

Viton is a registered trademark of E.I. DuPont

# EFV1-10-C - Proportional Valve

Proportional flow, normally closed, poppet  
Up to 38 L/min (10 USgpm) • 210 bar (3000 psi)

## Pressure Drop Curves



Note: To determine operating characteristics for the flow rating selected, at a specific differential pressure, first determine maximum flow from upper curve at the differential pressure value. This will be the "100%" flow on the lower curve.

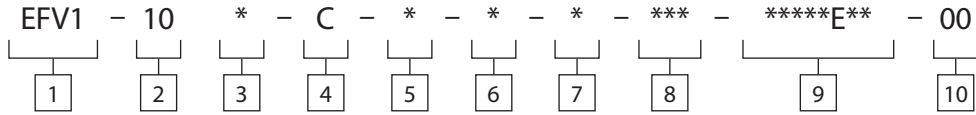
Parameters:  
400 Hz PWM

# EFV1-10-C - Proportional Valve

Proportional flow, normally closed, poppet  
Up to 38 L/min (10 USgpm) • 210 bar (3000 psi)

B

## Model Code



**1** Function  
EFV1 - Electro proportional flow control valve

**2** Size  
10 - 10 size

**3** Seal Material  
N - Buna-N  
V - Viton®

**4** Logic  
C - Normally closed

**5** Flow Rating  
A - 4 USgpm @ 160 PSID  
B - 8 USgpm @ 160 PSID  
C - 10 USgpm @ 160 PSID

**6** Manual Override Option  
0 - No core tube special features  
S - Screw-in

**8** Port Size

Code	Port Size	Housing Number	
		Aluminium Single	Steel Single
0	Cartridge only		
3B	3/8" BSPP	02-173358*	
6T	SAE 6	566162*	02-175124
8T	SAE 8		02-175125
2G	1/4" BSPP	876705	02-175127
3G	3/8" BSPP	876714	02-175128
6H	SAE 6	876704	
8H	SAE 8	876711	

Note: Both the manifold and port plug are required.  
See section J for housing details.  
\*Aluminum – Light duty.

**7** Valve Housing Material  
Blank - Cartridge only  
A - Aluminum  
S - Steel

**9** Coil Series  
E - E series coils  
\*These model digits will not be stamped on the valve.  
For coil part numbers and dimensions see section C.

**10** Special Features  
00 - None  
Only required when valve has special features, omitted if "00".

# EFV1-10-C - Proportional Valve

Proportional flow, normally closed, poppet  
Up to 38 L/min (10 USgpm) • 210 bar (3000 psi)

## Dimensions

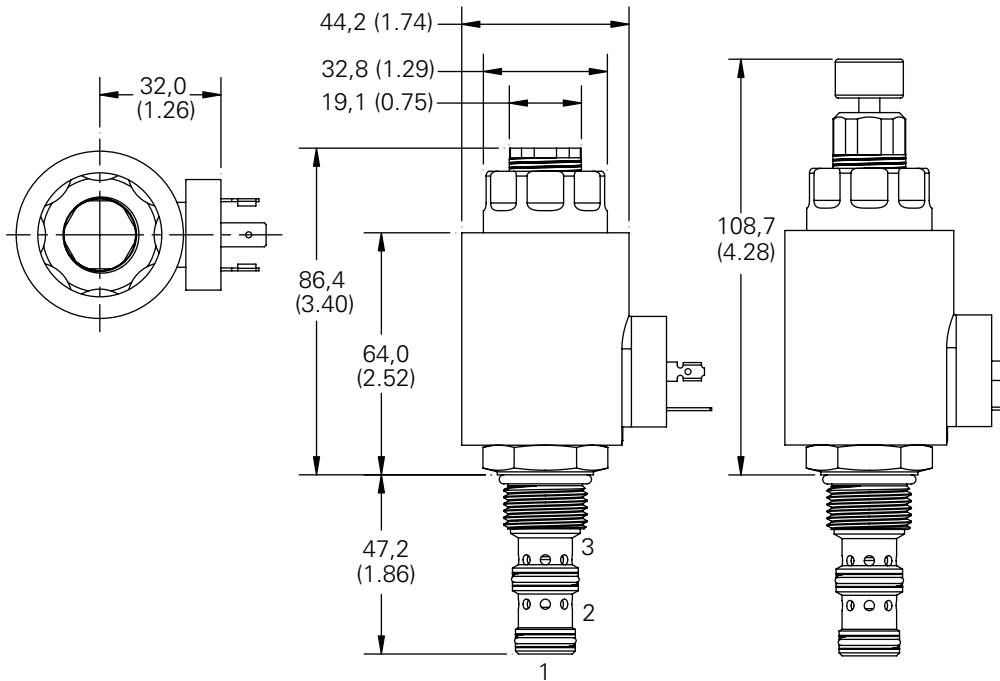
mm (inch)

Torque cartridge in housing  
S - 68-75 Nm (50-55 ft lbs)  
A - 47-54 Nm (35-40 ft lbs)

Note: S type manual override shown. DIN 43650 connector shown.

Note: Port 1 is unused and must be plugged.

## Cartridge Only



## Installation Drawing (Aluminum)

