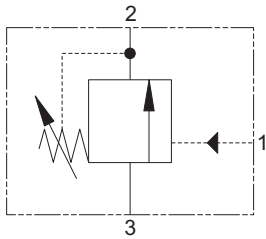


PSV2-8 - Pressure Sequence Valve

Spool, direct acting normally closed, internal drain
 23 L/min (6 USgpm) • 210 bar (3000 psi)



Operation

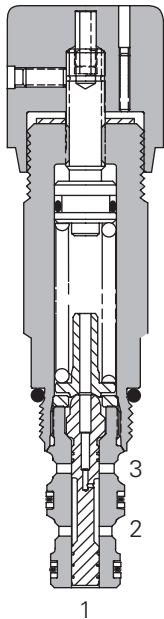
When a pre-set pilot pressure is reached the spool moves back against the spring opening the line between inlet and outlet.

When the pilot pressure falls the valve will return to its normal position.

Features

Cartridge design enabling speedy servicing when mounted in a body or in a composite manifold.

Sectional View



E

Performance Data

Ratings and Specifications

Performance data is typical with fluid at 21,8 cSt (105 SUS) and 49° C (120° F)

Typical application pressure (all ports)	210 bar (3000 psi)
Cartridge fatigue pressure (infinite life)	210 bar (3000 psi)
Sequence pressure ranges	13 – 3,4–90 bar (50–1300 psi) 30 – 35–210 bar (500–3000 psi)
Rated flow	23 L/min (6 USgpm)
Reseat pressure	More than 90% of cracking pressure
Internal leakage	82 cm ³ /min. (5 in ³ /min) @ 210 bar (3000 psi)
Hysteresis	less than 3 bar (45 psi)
Temperature range	-40° to 120°C (-40° to 248°F)
Cavity	C-8-3
Fluids	All general purpose hydraulic fluids such as: MIL-H-5606, SAE 10, SAE 20, etc.
Filtration	Cleanliness Code 18/16/13
Standard housing materials	Aluminum
Weight cartridge only	0,21 kg (0.47 lbs)
Seal kits	02-160755 Buna-N 02-160756 Viton*

Viton is a registered trademark of E.I. DuPont

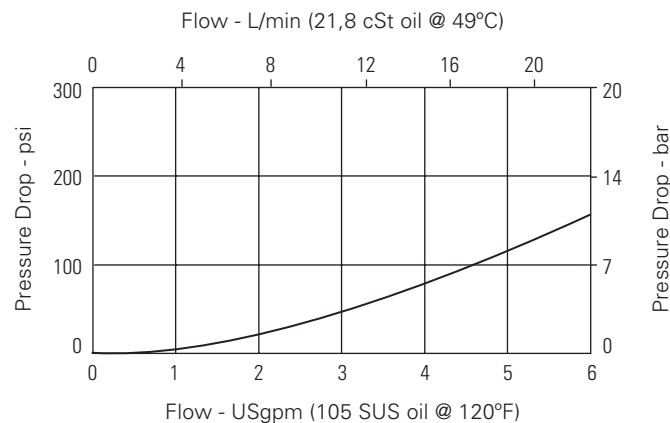
Description

This valve provides a means of opening a pressure line when a predetermined pilot pressure is reached in a normally closed form.

The valve can be used in any pilot or small flow system as a remotely operated sequence valve.

Pressure Drop Curve

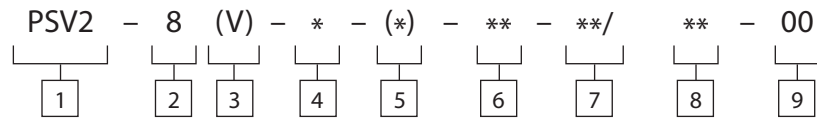
Port 3 to 2,
 valve fully open
 Cartridge only



PSV2-8 - Pressure Sequence Valve

Spool, direct acting normally closed, internal drain
 23 L/min (6 USgpm) • 210 bar (3000 psi)

Model Code



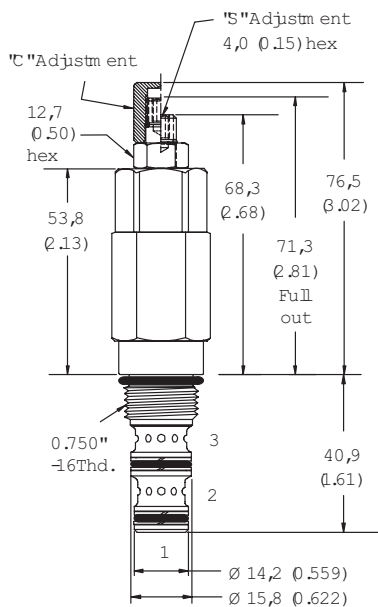
1 Function PSV2Size 83 Seal Material BlankV4 AdjustmentC S	5 Valve Housing Material Omit for cartridge only A - Aluminum Maximum operating pressure 210 bar (3000 psi)	7 Sequence Pressure Range Note: Code based on pressure in psi. 13 - 3,4-90 bar (50-1300 psi) 30 - 35-210 bar (500-3000 psi)	8 Pressure setting Optional - Specify in 100 psi increments. If not specified, set at: 13 - 44 bar (650 psi) 30 - 100 bar (1500 psi)															
<input type="checkbox"/>	6 Port Size 0 - Cartridge only Code Port Size Housing Number Aluminum Fatigue rated		9 Special features 00 - None (Only required if valve has special features, omitted if "00.")															
<input type="checkbox"/>	<table border="1"> <thead> <tr> <th>Code</th> <th>Port Size</th> <th>Housing Number</th> </tr> </thead> <tbody> <tr> <td>4T</td> <td>SAE 4</td> <td>02-160741</td> </tr> <tr> <td>6T</td> <td>SAE 6</td> <td>02-160742</td> </tr> <tr> <td>2G</td> <td>1/4" BSPP</td> <td>02-160739</td> </tr> <tr> <td>3G</td> <td>3/8" BSPP</td> <td>02-160740</td> </tr> </tbody> </table> <p>See section J for housing.</p>	Code	Port Size	Housing Number	4T	SAE 4	02-160741	6T	SAE 6	02-160742	2G	1/4" BSPP	02-160739	3G	3/8" BSPP	02-160740		
Code	Port Size	Housing Number																
4T	SAE 4	02-160741																
6T	SAE 6	02-160742																
2G	1/4" BSPP	02-160739																
3G	3/8" BSPP	02-160740																

Dimensions

mm (inch)

Torque cartridge in aluminum or steel housing
 34-41 Nm (25-30 ft. lbs)

Cartridge Only



Installation Drawing

