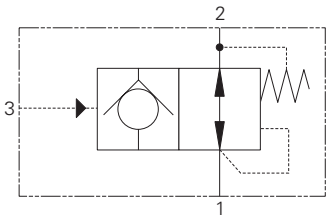


ADV1-16 - Accumulator Discharge Valve

Poppet, normally open, external pilot
 30 L/min (8 USgpm) • 210 bar (3000 psi)



Operation

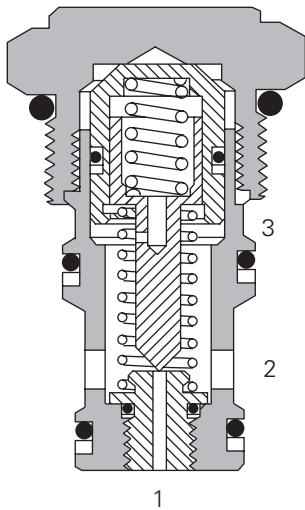
The valve remains open between port 1 and 2 until sufficient pilot pressure is applied to port 3.

This holds pressure in port 1 until the pilot pressure is released allowing flow to take place from port 1 to 2.

Features

Hardened poppet and seat.
 Very low leakage when piloted closed without exerting excessive force on the seat.

Sectional View



Performance Data

Ratings and Specifications

Performance data is typical with fluid at 21,8 cSt (105 SUS) and 49° C (120° F)

Typical application pressure (all ports)	210 bar (3000 psi)
Cartridge fatigue pressure (infinite life)	210 bar (3000 psi)
Rated flow	30 L/min (8 USgpm)
Minimum pilot pressure @ port 3	4 bar (60 psi)
Cavity	C-16-3
Standard housing materials	Aluminum
Temperature range	-40° to 120°C (-40° to 248°F)
Fluids	All general purpose hydraulic fluids such as: MIL-H-5606, SAE 10, SAE 20, etc.
Filtration	Cleanliness Code 18/16/13
Pilot ratio	100:1
Weight cartridge only	0,28 kg (0.62 lbs)
Seal kits	565812 Buna-N 889611 Viton®

Viton is a registered trademark of E.I. DuPont

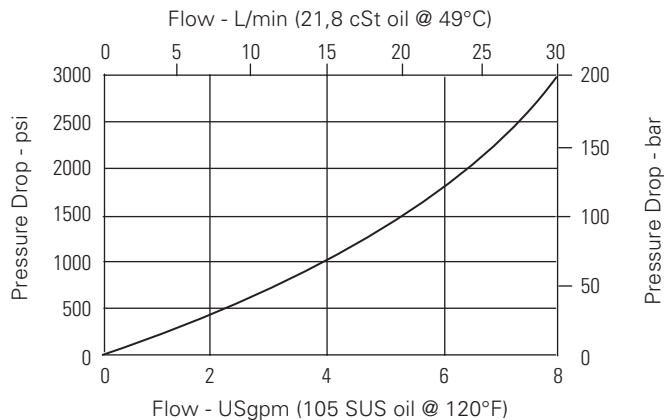
Description

ADV1-16 is a poppet type pilot to close check valve with a 100 to 1 pilot ratio ideal for accumulator discharge applications.

Pressure Drop Curves

Cartridge only

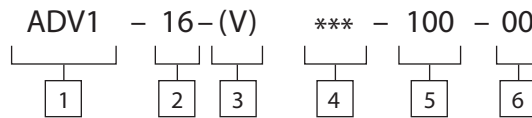
Port 3 pilot pressure = 0



ADV1-16-Accumulator Discharge Valve

Poppet, normally open, external pilot
30 L/min (8 USgpm) • 210 bar (3000 psi)

Model Code



1 Function
ADV12 Size
163 Seal material
BlankV

4 Port Size
0 - Cartridge only

Code	Port Size	Housing Number	
		Aluminum Light duty	Aluminum Fatigue rated
6B	3/4" BSPP	02-175471	-
12T	SAE 12	566414	-
4G	1/2" BSPP	-	802-160676
6G	3/4" BSPP	-	876726
10H	SAE 10	-	876725
12H	SAE 12	-	876727

5 Pilot area ratio
Port 3: Port 1 - 100:1
(Minimum pilot pressure at port 3 - 4 bar (60 psi))

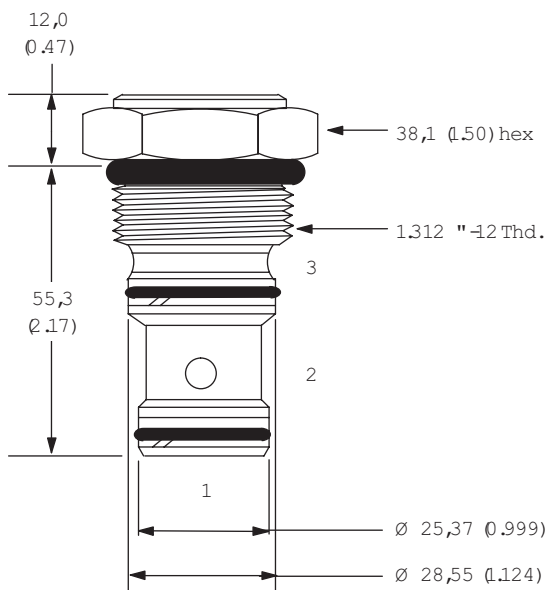
6 Special features
00 - None
(Only required if valve has special features, omitted if "00.")

See section J for housing.

Dimensions

Torque cartridge in housing
108-122 Nm (80-90 ft. lbs)

Cartridge Only



Installation Drawing

