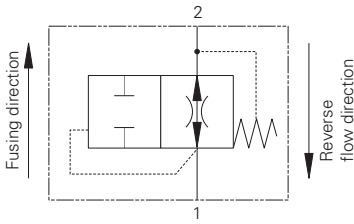


VF1-10/VF11-10 - Velocity Fuse

23 L/min (6 USgpm) • Up to 350 bar (5000 psi)



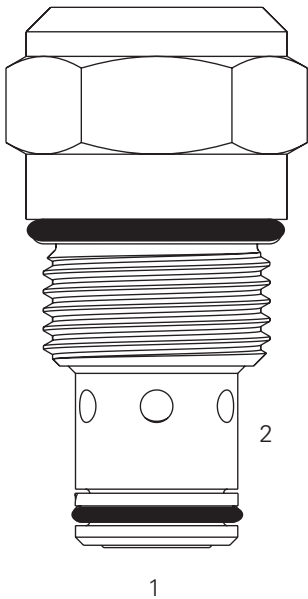
Operation

This valve is normally open from port 1 to port 2. When flow exceeds the setting of the valve, it closes. The valve returns to the open condition when the pressure at port 1 is reduced to less than 80 psi.

Features

Hardened and ground and honed working components. Cartridge construction for maximum mounting flexibility.

Sectional View



Performance Data

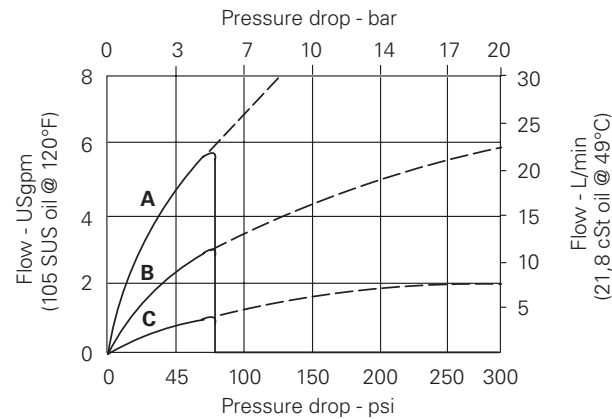
Ratings and Specifications

Performance data is typical with fluid at 21,8 cSt (105 SUS) and 49°C (120°F)		
Typical application pressure (all ports)	VF1/VF11	210 bar (3000 psi) / 350 bar (5000 psi)
Cartridge fatigue pressure (infinite life)	VF1/VF11	210 bar (3000 psi) / 350 bar (5000 psi)
Rated Flow		23 L/min (6 USgpm)
Flow regulation accuracy		1,9–22,7 L/min (0,5–6,0 USgpm) ±20%
Factory set maximum flow rate accuracy under standard test conditions and within the above ranges		
Internal leakage	Port 2 to 1;	<5 drops/min, maximum @ 210 bar (3000 psi)
Temperature range		-40° to 120°C (-40° to 248°F)
Cavity		C-10-2
Fluids	All general purpose hydraulics fluids such as: MIL-H-5606, SAE 10, SAE 20, etc	
Filtration		Cleanliness code 18/16/13
Standard housing materials		Aluminium or steel
Weight		0,11 kg (0.25 lbs)
Seal kit		565803 (Buna-N) 566086 (Viton)

Viton is a registered trademark of E.I. DuPont

Pressure Drop

Cartridge only



A - 22,8 L/min (6 USgpm)
maximum flow setting

B - 14,44 L/min (3 USgpm)
maximum flow setting

C - 3,8 L/min (1 USgpm)
maximum flow setting

— Port 1 to 2,
fusing direction

— Port 1 to 2,
fusing direction

— Port 1 to 2,
fusing direction

--- Port 2 to 1, reverse
flow down to 0

--- Port 2 to 1, reverse
flow down to 0

--- Port 2 to 1, reverse
flow down to 0

Note: The valve is not intended for use in pump unloading applications

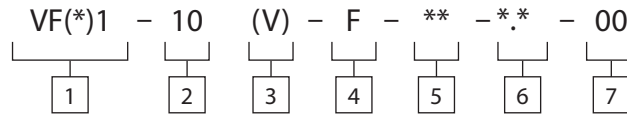
Description

This is a screw in cartridge velocity fuse used to lock a cylinder or motor in place in the case of a complete hose failure.

VF1-10/VF11-10 - Velocity Fuse

23 L/min (6 USgpm) • Up to 350 bar (5000 psi)

Model Code



1 Function
 VF1 - Velocity fuse 210 bar (3000 psi)
 VF11 - Velocity fuse 350 bar (5000 psi)

2 Size
 10 - Size

3 Seals
 N or Blank - Buna-N
 V - Viton®

4 Adjustment
 F - Fixed orifice

5 Port Size

Code	Port Size	Housing Number		
		Aluminium Light Duty	Aluminium Fatigue Rated	Steel
0	Cartridge only			
(A)3B	3/8" BSPP	02-175462	-	-
(A)6T	SAE 6	566151	-	-
(A)2G	1/4" BSPP	-	876702	-
(A)3G	3/8" BSPP	-	876703	-
(A)6H	SAE 6	-	876700	-
(A)8H	SAE 8	-	876701	-
S6T	SAE 6	-	-	02-175100
S8T	SAE 8	-	-	02-175101
S2G	1/4" BSPP	-	-	02-175102
S3G	3/8" BSPP	-	-	02-175103

See section J for housing details.

6 Factory Set Flow Rate
 (Specify in USgpm) Range
 1,9-22,7 L/min ((0.5 - 6.0 USgpm)

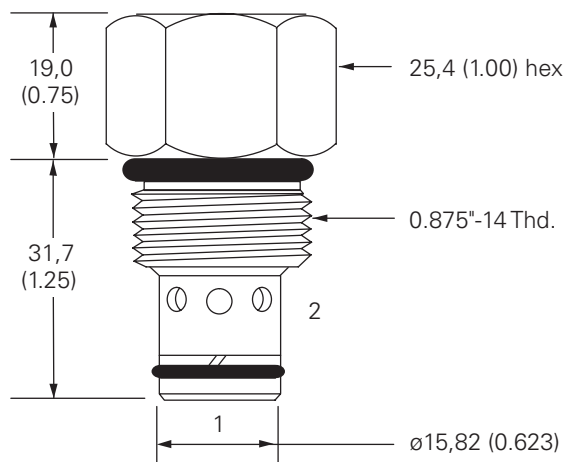
7 Special Features
 00 - None
 (Only required if valve has special features, omitted if "00")

Dimensions

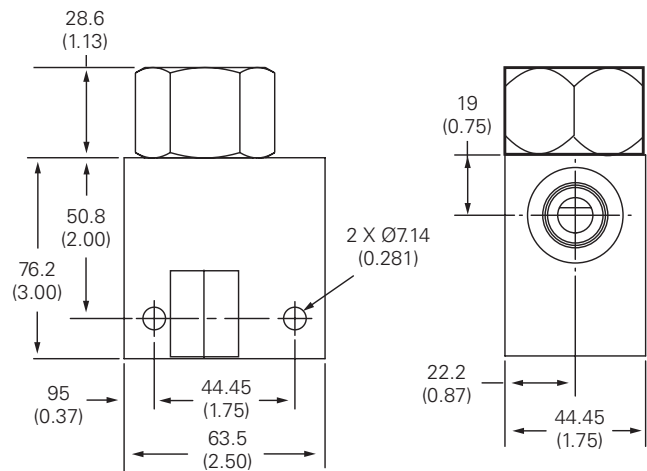
mm (inch)

Torque cartridge in housing:
 A - 47-54 Nm (35-40 ft lbs)
 S - 68-75 Nm (50-55 ft lbs)

Cartridge Only
 Basic Code
 VF1/11



Installation Drawing (Steel)



WARNING

Aluminum housings can be used for pressures up to 210 bar (3000 psi). Steel housings must be used for operating pressures above 210 bar (3000 psi).