

HZRP10 Precision regulator

The HZRP10 precision regulator provides one of the highest level of regulation and repeatability available on the market. It is ideal for applications that call for the utmost control and stability under variable operating conditions.

The use of a special stainless steel capsule as sensing and control element of the balanced mechanism allows for great precision and eliminates the typical problems associated with conventional regulators using springs and diaphragms.

Available in standard version (HZRP10) and with high relief capacity (HZRP12). Accessories upon request (gauges, mounting brackets).



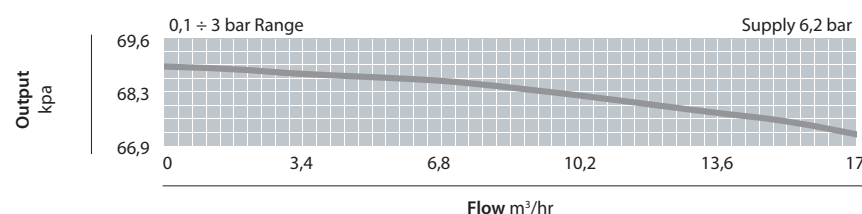
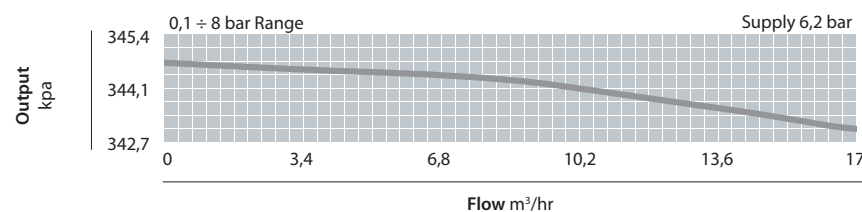
TECHNICAL CHARACTERISTICS

Port sizes	G1/4
Gage port	G1/4
Pressure	max 10 bar
Temperature	-40 ÷ +70 °C
Weight	0,64 Kg
Adjusting Field	0,1 ÷ 3 bar - 0,1 ÷ 4 bar - 0,1 ÷ 8 bar
Flow Capacity	420 NI/min
Total Air Consumption	3,5 NI/min
Bleed Orifice Air Consumption	less than 2,5 NI/min
Exhaust Capacity	HZRP10 = 57 NI/min - HZRP12 = 280 NI/min
Supply Pressure Variation	less than 0,4 mbar (with pressure variation of 2 bar)
Sensitivity	0,3 mbar

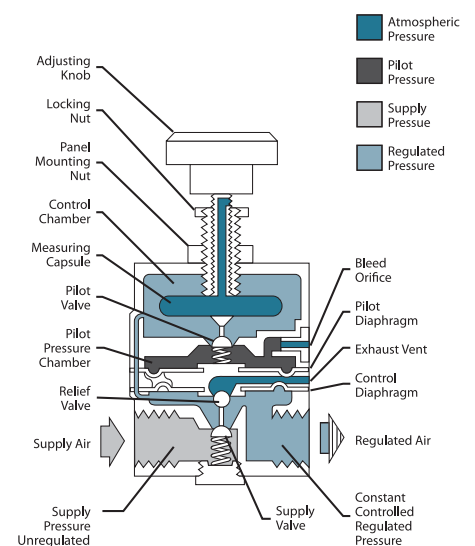
CONSTRUCTION CHARACTERISTICS

Body	Zamak
Diaphragms	NBR
Capsule and adjusting screw	Stainless steel
Knob	Tecnopolymer

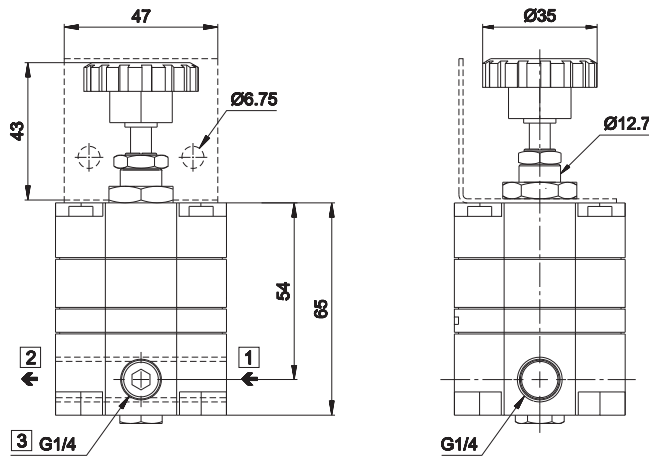
FLOW CHARACTERISTICS



Principles of Operation



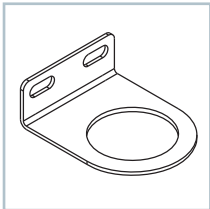
DIMENSIONS



- 1 Input
- 2 Output
- 3 Gage port

ACCESSORIES

HZRP1310



■ Mounting brackets

HZ9P500 __ 14



■ Gauges Ø50 - G1/4

HZ9P5000314 0 - 2,5 bar
 HZ9P5000614 0 - 6 bar
 HZ9P5001014 0 - 10 bar

CODIFICATION KEY

HZRP	10	08G	A
1	2	3	4

1 Series	2 Model	3 Ports	4 Adjusting Field
HZRP	10 = standard 12 = higher relief	08G = G1/4	A = 0,1 - 3 bar B = 0,1 - 4 bar C = 0,1 - 8 bar

INSTALLATION

The Precision Regulator is designed for air service only. A 5 micron filter installed before the Precision Regulator is recommended to prevent contaminant from affecting the regulator's performance. Clean all air lines before installation and apply a small amount of compound to the male threads only. Be sure that the exhaust vents are not blocked. The Precision Regulator can be mounted in any position.

OPERATION

Back off the pressure adjusting knob before putting the regulator into operation. Turn on the supply pressure slowly then turn the adjusting knob until the desired output pressure is reached.

A minimum supply pressure of 1.4 bar more than the regulated pressure is recommended.

Since this instrument utilizes an air bleed servo-control action, escaping air may be audible near the area of the bleed screw - this is normal and is required for precise control.

MAINTENANCE

Occasional attention may be required due to the natural accumulation of foreign matter in the instrument. If gauge readings appear to fluctuate for no reason it is usually an indication that the bleed screw requires cleaning.

This can be performed by simply removing the bleed screw from the body and cleaning both the screen and the bleed screw.

Clean any foreign matter from the small orifice in the tip of the screw.

UNIVER S.p.A.

Headquarter

20128 Milano

Via Eraclito, 31

Tel. +39 02 25298.1

Fax +39 02 2575254

e-mail: info@univer-group.com

www.univer-group.com